

IMPACTS AND OUTCOMES OF ASSET MANAGEMENT AND SUSTAINABILITY.

meliorate[®]
THE INFRASTRUCTURE CONSULTANTS



Importance of asset management and sustainability in today's world

meliorate GmbH
Unter den Linden 10
10117 BERLIN
www.meliorate.de

Presentation to IRAMI Conference 10 October 2024

Company presentation
November 2022

- Part 1: Understanding Asset Management in a Changing World
- Part 2: Key Impacts of Asset Management on Sustainability
- Part 3: Outcomes—Sustainability Driving Long-Term Value
- Part 4: The Future of Asset Management and Sustainability

PART 1: ASSET MANAGEMENT AND ISO 55000

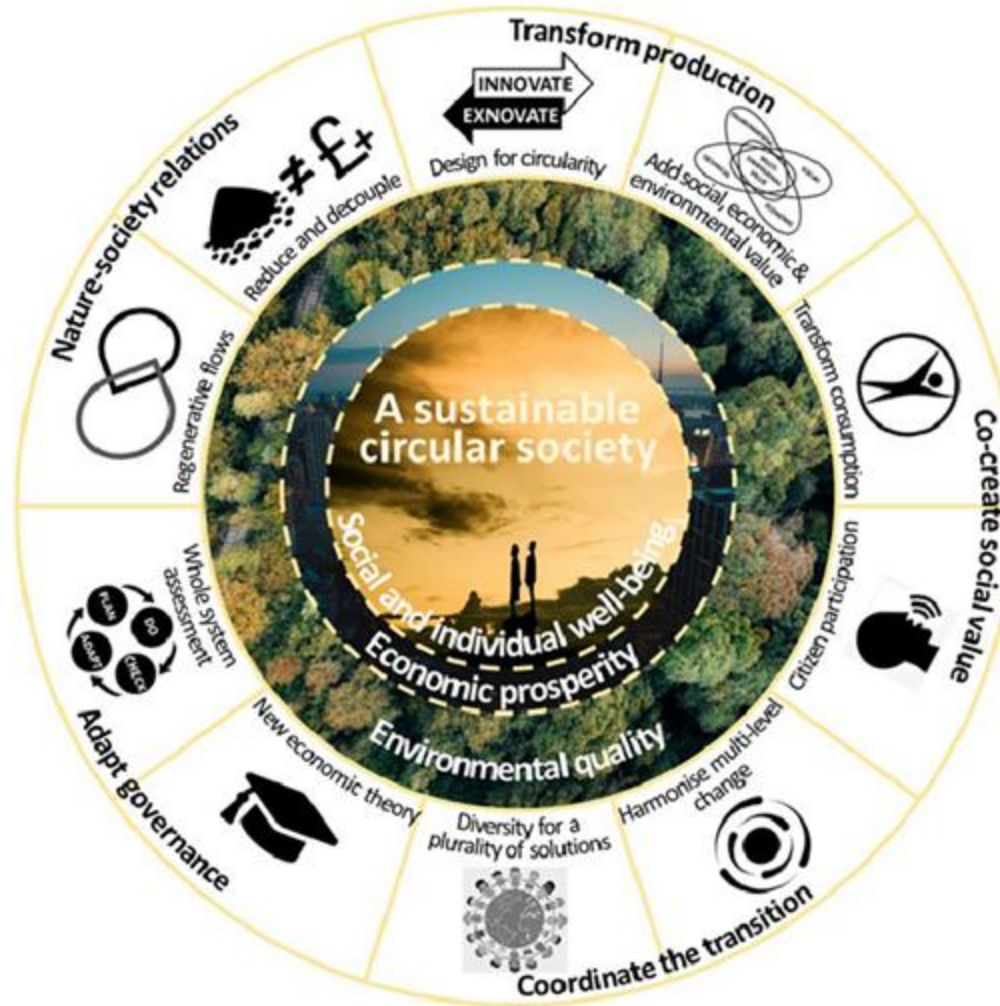


Risk Management
Life Cycle Considerations
Value Creation

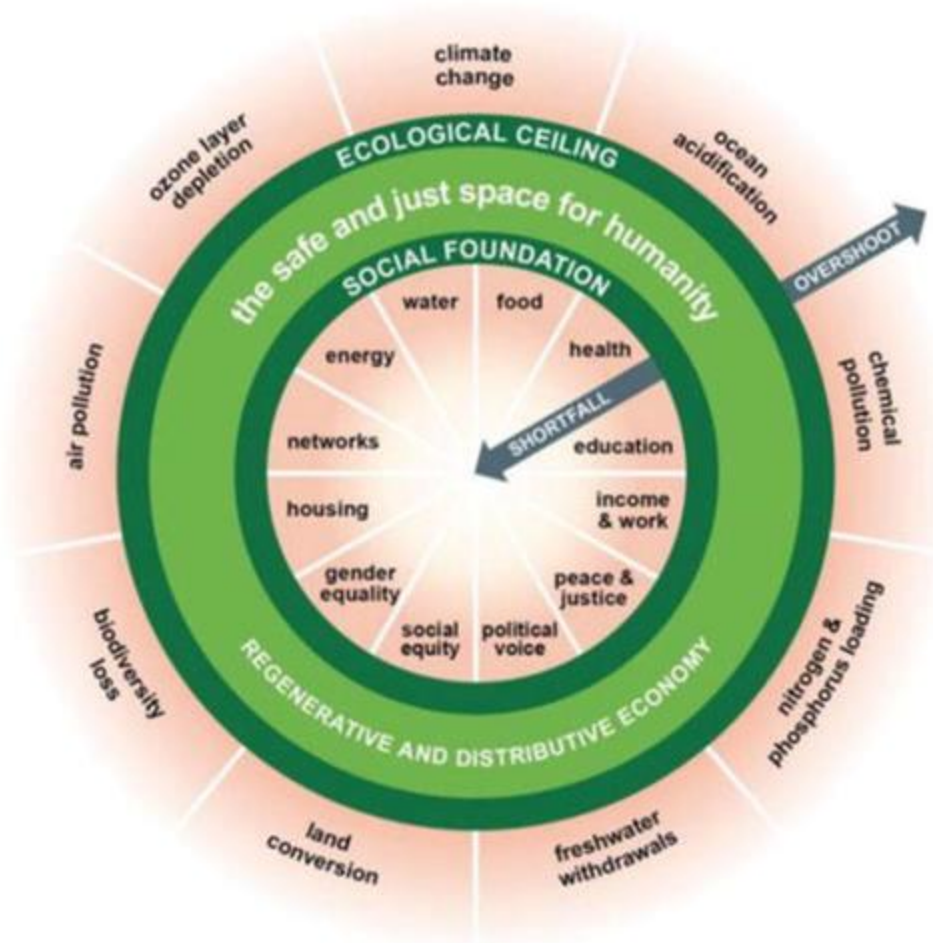
Reliability
Performance
Profitability

Environmental, Social,
and Governance (ESG) Factors

Sustainability



PART 2: THE IMPACT OF SUSTAINABILITY ON ASSET MANAGEMENT

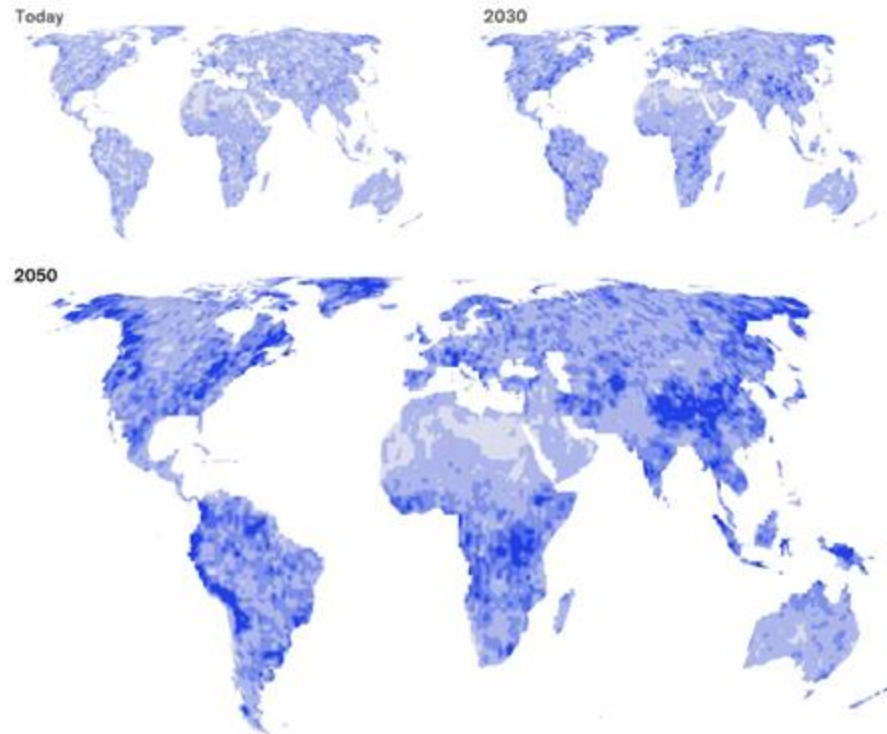


Minimizing carbon emissions and waste

Enhancing long-term asset value

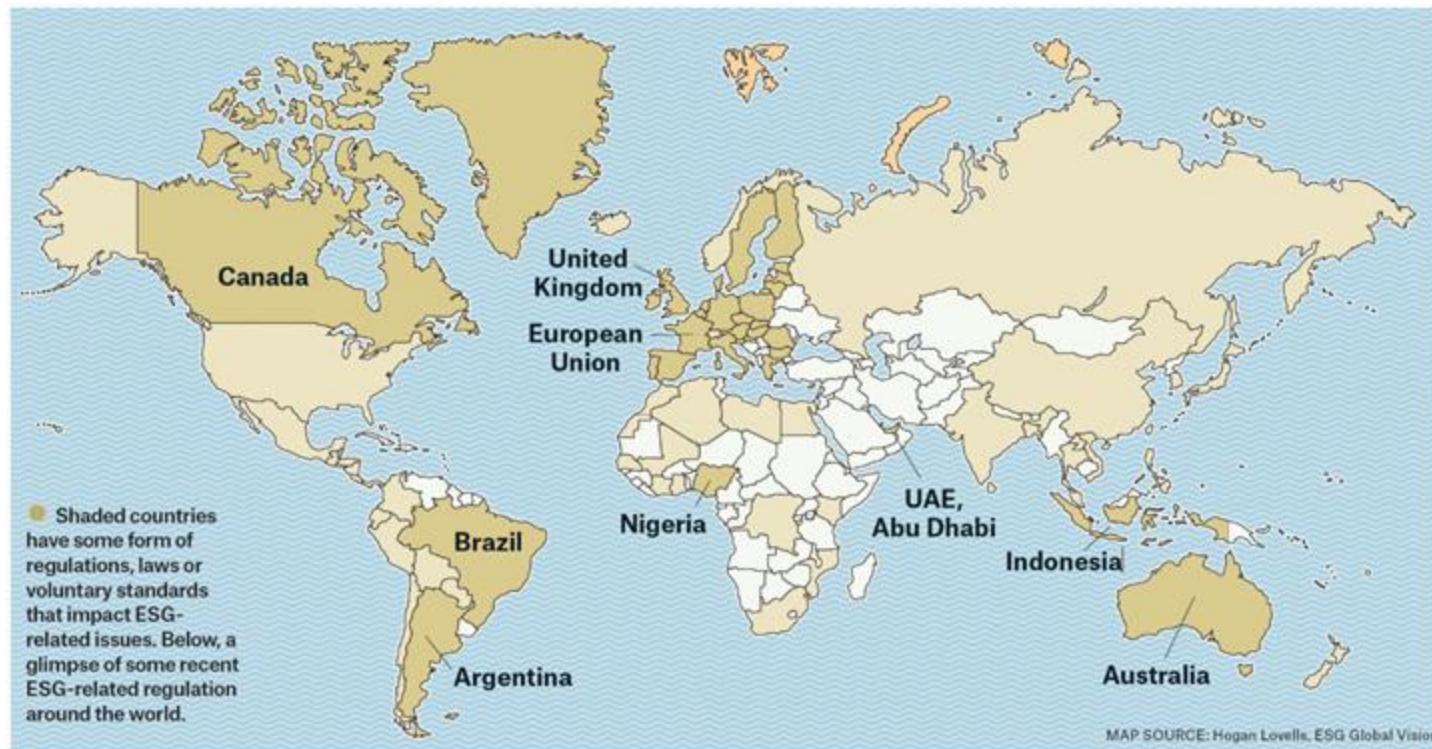
The likelihood of extreme precipitation could grow fourfold in parts of Central Africa, China, and the east coast of North America compared with 1950–81.

Extreme precipitation (based on RCP¹ 8.5),
change of likelihood of a 1950–81 (50-year) precipitation event



¹RCP = representative concentration pathways. All projections based on RCP 8.5 and Coupled Model Intercomparison Project 5 multimodel ensemble. Following standard practice, future (2030, 2050) states as the average climatic behavior over multidecade periods. Climate today is defined as average between 1998 and 2017, in 2030 as average between 2021 and 2040, and in 2050 as average between 2041 and 2060.
Source: Woods Hole Research Center, McKinsey Global Institute analysis

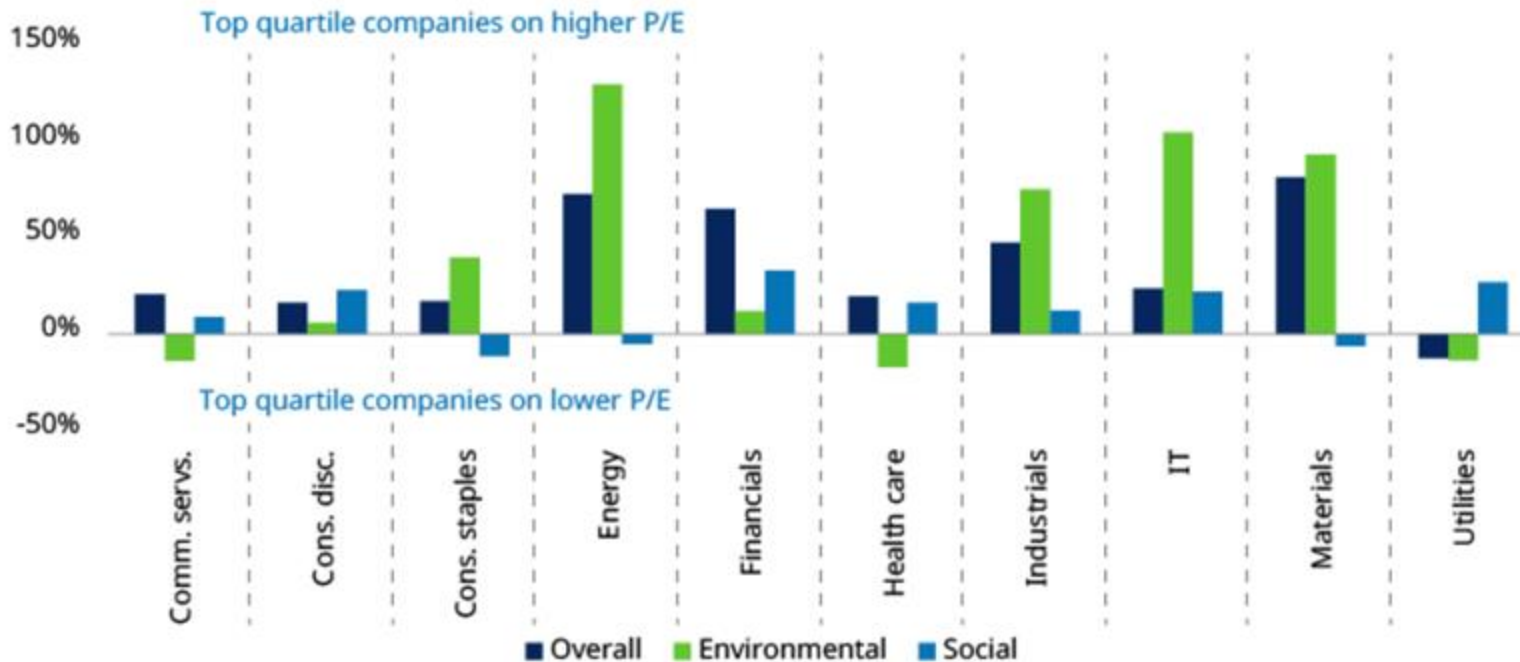
Global sustainability regulations Net-zero carbon goals



PART 3: SUSTAINABILITY DRIVING REAL ASSET VALUE

Figure 3: Are investors paying more attention to environmental or social risks?
How much higher is trailing P/E for companies in top quartile for SustainEx vs those in bottom quartile (for SustainEx overall and sub-groupings)

Schroders



Source: Schroders. Bars show the price/earnings multiple of the median company in the top quartile minus the figure for the median company in the bottom quartile. Quartiles of SustainEx distribution are calculated separately for each sector in MSCI ACWI, to compare companies with their sector-peers. SustainEx is a measure of the dollar cost/value of a company's impact on society, scaled to its sales for comparability. For more information, please see SustainEx: Quantifying the hidden costs of companies' social impacts, Schroders, 2019. Data as at 31 March 2022. 604790.



Four scenarios for 2050



ALIGNMENT WITH GLOBAL SUSTAINABILITY GOALS

SUSTAINABLE DEVELOPMENT GOALS

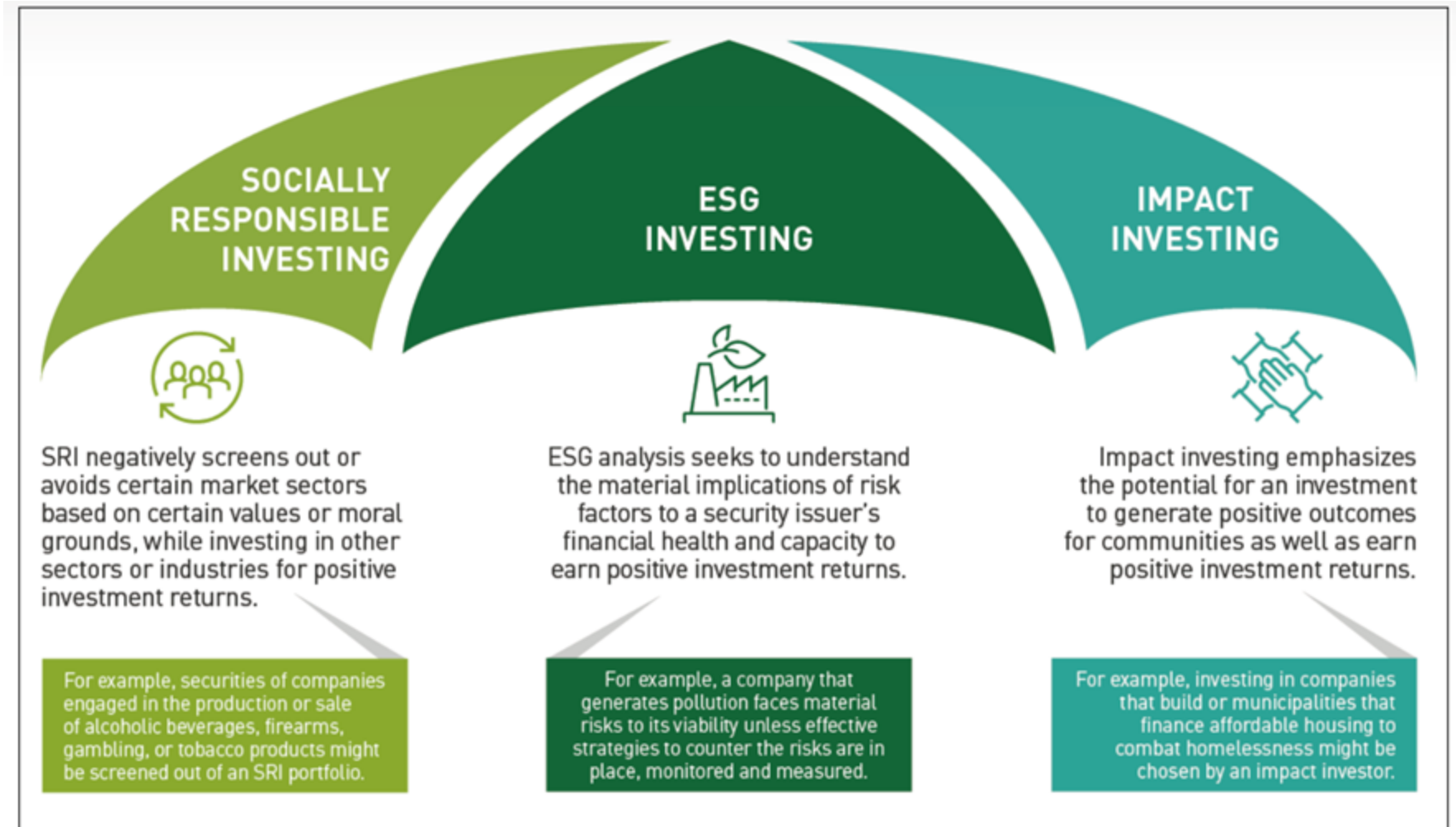


PART 4: THE FUTURE OF SUSTAINABLE ASSET MANAGEMENT



INCREASING REGULATORY PRESSURE





1. Sustainability is no longer optional—it's a core part of effective asset management.
2. Integrating sustainability can enhance asset value, mitigate risks, and drive long-term performance.
3. The future of asset management is digital, data-driven, and deeply intertwined with sustainability goals.

THANK YOU - QUESTIONS



meliorate GmbH
Unter den Linden 10
10117 BERLIN
+49 (30) 12 05 33 60
information@meliorate.de
www.meliorate.de



Geschäftsführer: Oliver D. Förster, Lars Overdiek
Sitz der Gesellschaft ist Berlin, HRB 137134 B (Amtsgericht Berlin-Charlottenburg)

